



FRENCH COURSES 2026



La certification qualité a été délivrée
au titre de la catégorie d'action suivante :
ACTIONS DE FORMATION



ADULTS



LONG-TERM



JUNIORS



WHERE IS LA ROCHELLE?

On the sunny Atlantic coast of the Charente-Maritime department in Western France lies the exquisite town of La Rochelle. Famous for its rich cultural history, and easy-going way of life, La Rochelle was voted in the top ten nicest places to live in France in 2025.



SUMMARY

P.03 La Rochelle

P.04 Our School

P.06 10 reasons to choose
inlingua La Rochelle

P.07 Adult Courses

P.18 Long-term Courses

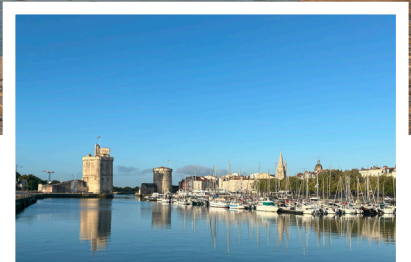
P.19 Junior Courses

P.28 Accommodation

P.33 Useful Information

P.34 Getting to La Rochelle

La Ville Belle + Rebelle



LA ROCHELLE

In the past, La Rochelle was a pioneering town from which ships set sail to explore the New World. Today, the innovative spirit of the Rochelais continues to shine through remarkable achievements in other areas, showcasing the city's dynamism for a place of its size.

Among some of the most recent:

- The University of La Rochelle has launched a groundbreaking marine research program focused on ocean sustainability
- The city has been recognized as a European leader in green energy initiatives, with its innovative tidal power projects.
- La Rochelle's cultural scene has flourished, with the city's film festival attracting international attention and acclaim for its focus on environmental filmmaking

Why choose La Rochelle?

- La Rochelle is less than 3 hours from Paris
- A peaceful town with a population of 80,000
- On the coast and near 3 magnificent islands
- Over 230km of cycle paths
- Railway station and airport
- Easy and cheap bicycle hire
- Pleasant maritime climate all year round
- Free cultural events all year round
- Francofolies: one of the biggest music festivals in France
- Parks, museums and the world famous aquarium...

Aimez-vous la gastronomie ?

The excellence of French cuisine is famous around the world, and La Rochelle is no exception. A large variety of local products can be found in the area. Try an oyster in Aytré or the typical Mouclade on the port. Explore your senses with local wines, Cognacs and Pineaux.

Aimez-vous la culture ?

Discover the history of La Rochelle through visits to our museums and monuments with guided tours or by exploring the picturesque streets on your own.



**LA ROCHELLE:
THE 6TH MOST
VISITED TOWNS
BY FRENCH
TOURISTS**



OUR SCHOOL

- 300M FROM *THE OCEAN*
- 500M FROM *THE COUNTRYSIDE*

Our facilities

- 12 classrooms
- Additional rooms in high season
- A large shady terrace area
- IT room
- Free WiFi
- Free parking
- Covered bike area
- Reading area
- Tourist information area
- Kitchen with fridge and microwave oven
- Hot and cold drinks



About inlingua

- Open all year round
- One of 300 inlingua schools in over 40 countries around the world
- Ideal location – only a stone's throw from the beach and the centre of town
- An official exam centre



inlingua
à la Rochelle



How to get to inlingua

- 10-minute bus ride from the centre of town. The nearest bus stop is less than 100 metres from the school and buses are every 15 minutes.
- Cycle paths from the centre of town which take you down the coast where you can take in the picturesque scenery

Where to eat ?

Traditional French restaurants and bakeries can be found less than a minute from the school on foot. We provide our students with a list of classic French dining options in the town or next to one of our exquisite beaches.



10 GOOD REASONS TO CHOOSE inlingua LA ROCHELLE

SO MUCH MORE THAN JUST A LANGUAGE COURSE -

#01 Students studying at **inlingua** are not only involved in the classes, they may also participate in a wide range of activities with the school. From evenings on the beach playing games, to running around the town for a scavenger hunt, and even day trips to Bordeaux & Nantes between the months of April and October!

#02 A UNIQUE TOWN AND REGION you will enjoy discovering with us. We organize several activities outside of class to accompany the classes as you explore La Rochelle and its surrounding area.

- On Monday afternoons we organize a guided tour of the town for our new students.
- We organize at least one evening "rendez-vous" per week in some of the town's most typical locations for students to practice their French in a more relaxed environment.
- Saturday day trips with a member of our team where our clients can learn more about French culture and way of life.

#03 A WIDE RANGE OF SERVICES:

To make your stay with us as easy as possible, we offer additional services.

A detailed map of the town will be handed out on your first day along with the tide table, and other information that will be useful during your stay.

Bus passes or even a French SIM card can make all the difference to your stay.

For any other requirements, such as laundry or transport to the Île de Ré, we will provide you with a list of useful addresses.

For anything else, just ask!

#05 TRANSFER SERVICE

from La Rochelle train station or airport, but also from Nantes & Bordeaux.

#06 AN OFFICIAL EXAMINATION CENTRE

for the TCF French proficiency exam. We can organise new sessions depending on the needs of our students.

If you would like to pass the DELF or the DALF, we can also prepare you for the exam.

#04 AN ACCOMMODATION SERVICE

We can help you find housing that suits both your needs and your budget: homestay, residences, apartments, villas or even boats in the famous Port des Minimes.

#07 PROFESSIONAL TRAINERS:

all of whom are native French speakers and highly qualified to teach French as a foreign language. They are particularly committed to helping you acquire new language skills & develop your love of France & La Rochelle.

#08 A UNIQUE METHOD:

the **inlingua** method has been proven successful for 50 years all over the world and its education research centre produces modern and effective tools for language teaching.

#09 SMALL GROUPS

offer an exceptional opportunity for all participants to immerse themselves in the language, fostering effective language acquisition and comprehensive understanding for everyone involved.

#10 NATIONAL HOLIDAYS :

We offer three different solutions:

Lessons are held as per normal:

06/04 - 25/05

No lessons, but they are held on another day in the week:

01/05 - 08/05 - 14/05 - 11/11

No lessons but a replacement activity is organised by the school (cruise to an island...) **14/07**

LA ROCHELLE, VOTED BEST TOWN FOR CYCLING IN FRANCE

With over 230 kilometres of cycle paths, our students can cycle around the town safely without going on roads.

There is a bike share service with stations all around the town where students can pick up and drop of a bicycle.

It is also possible for students to rent a bicycle from **inlingua** (depending on availability).

SUMMARY ADULT COURSES



P.08-09

General French 15h & 20h



P.10

Exam Preparation



P.11

Intensive 25h or 30h



P.12

One-to-One & Combi



P.13

30+



P.14-15

50+ Culture



P.16

Adult sailing course



P.17

Family Programme



P.18

Long-term Courses

ADULT COURSES

GENERAL FRENCH

15 HOURS

Discover the pleasures of learning French with **inlingua's** General French programmes, tailored to fit the needs of students of all levels. Classes in small groups ensure maximal progression on the course. Through dynamic classes and interesting topics, our highly trained teachers can teach students from beginner levels to even the most advanced speakers on their French language journey.



General French 15h

- ✓ **All-year round**
- ✓ From 16 years-old
- ✓ 1 week minimum
- ✓ Max. 10 per group
- ✓ A1 - C1
- ⚠ **Beginners start on specific dates :**
05/01 | 06/04 | 25/05 | 06/07
20/07 | 03/08 | 28/09 | 16/11

Course Dates

All-year round

All levels, **except complete beginners**, are accepted all year-round and you can start whenever you wish.

Take the **level placement test** on our website today to find out what level you have and which programmes are adapted to you.

Beginner Students

A beginner level is given to those who have no knowledge of French or who cannot communicate, even with simple sentences (test result < A1.3).

If a student with a **beginner level** registers for a course **outside of specific starting dates for beginners**, we will offer them an adapted one-to-one programme as stated in our **Terms & Conditions** on our website.

15-hour Course

The 15-hour General French course is designed to offer a flexible, all-year-round learning opportunity for student.

With small class sizes of up to 10 students, this course is ideal for learners at various proficiency levels, from A1 to C1, ensuring personalized attention and faster progression.

Classes focus on building key language skills in an engaging and dynamic way, fostering an environment that encourages active participation.

We put a heavy emphasis on oral communication in our General French classes as we believe this is the most essential part of learning a language.

PRICES PER WEEK AND PER PERSON

PROGRAMME	1 WEEK	2-3 WEEKS	4-8 WEEKS	9-12 WEEKS	12+ WEEKS
General French 15 hours	330 €	310 €	290 €	275 €	255 €
ENROLMENT FEE: 80 €					

GENERAL FRENCH

20 HOURS

General French 20h

✓ All-year round

- ✓ From 16 years-old
- ✓ 1 week minimum
- ✓ Max. 10 per group (morning classes)
- ✓ Max. 15 per group (cultural workshops)
- ✓ A2 - C1
- ⊗ **Beginners not accepted on this course**

Not sure which level you have ? Take our online test today !



Scan this code
to do our
Online Level
Test

20-hour Course

Immerse yourself in the richness of French language, culture, and history with our comprehensive 20-hour General French course. This program provides a well-rounded experience, combining engaging morning classes with two dynamic afternoon workshops per week.

These workshops are designed to give students the opportunity to apply their newly acquired language skills in real-life, practical situations while exploring diverse and fascinating aspects of French culture.

In these afternoon sessions, students will enjoy a more relaxed and conversational environment, allowing them to build confidence in speaking while learning about various topics such as French gastronomy, fashion, literature, or the country's regional diversity.

Whether held at **inlingua** or around the city, these workshops create a stimulating and interactive way to practice French in a social context. To ensure students can fully benefit from this experience, a minimum A2 level of French is required to participate, making these sessions a perfect complement to your morning language classes.

Sample Programme

	MONDAY	TUESDAY	WEDNESDAY	THURSDAY	FRIDAY	SATURDAY
Morning	10:00 - 13:15 French Classes	9:00 - 12:15 French Classes				Excursion to the île de Ré
Afternoon	14:30 Guided tour of the town	13:30 - 16:15 Cultural Workshop (20h)	Free time	13:30 - 16:15 Cultural Workshop (20h)	Free time	
Evening		18:30 P'tit RDV		16:30 Pétanque		

EXAMPLES OF WORKSHOP THEMES :

FRENCH HISTORY

FRENCH GASTRONOMY

MUSEUMS

FRENCH POLITICS

REGIONS & DEPARTMENTS

WINE & CHEESE TASTING

LES TOURS DE LA ROCHELLE

FRENCH FASHION

FRENCH LITERATURE

PRICES PER WEEK AND PER PERSON

PROGRAMME	1 WEEK	2-3 WEEKS	4-8 WEEKS	9-12 WEEKS	12+ WEEKS
General French 20 hours	410 €	385 €	365 €	340 €	320 €

ENROLMENT FEE: 80 €

EXAM PREPARATION

inlingua La Rochelle is in contact with partner centres who offer **DELTA & DALF** sessions throughout the year and offers preparatory courses. **inlingua** is also an examination centre for the **TCF** exam. The TCF is an internationally recognized test which measures your knowledge and skills in French and which is accepted by every school or University as a proof of a B2 level.



📅 All year round

✓ 1 week minimum

✓ A1 - C1

📅 Beginners start on specific dates

05/01 | 06/04 | 25/05 | 06/07

20/07 | 03/08 | 28/09 | 16/11

Exams Available

We offer one-to-one preparation for a variety of French language exams, including DELF, DALF, TCF, A-Levels, Matura, and other French language certifications.

Our personalised exam prep helps students succeed in all aspects of their chosen exam, guided by our trainers who are official DELF & TCF examiners.

The DELF/DALF Exam

The DELF/DALF are official French-language diploma awarded by the French Ministry of Education, recognized worldwide.

It certifies French proficiency at levels A1 to B2, covering skills in reading, writing, listening, and speaking. It's ideal for students looking to prove their French proficiency for personal, academic, or professional reasons.

DELTA Inscriptions

Registrations for the DELF exams must be completed at least one month before the exam date.

If you know which level you would like to take, we can manage your registration at nearby centres such as La Rochelle, Royan, Tours, or Bordeaux.

The TCF Exam

The TCF is an official French language proficiency test designed for non-native speakers who need to validate their French skills for immigration, academic, or professional purposes.

As an official TCF exam center, we offer students the chance to take the TCF exam directly at our school while they are studying.

We can even set up a private exam session based on your schedule, offering both convenient test-taking and thorough preparation.

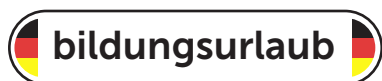
Timetable

- 15h of General French morning classes
- 5 hours of one-to-one classes for preparing the French exam of your choice

PRICES PER WEEK AND PER PERSON

PROGRAMME	1 WEEK	2-3 WEEKS	4-8 WEEKS
DELTA/DALF Prep One-to-One	735 €	700 €	680 €
ENROLMENT FEE: 80 €			

INTENSIVE



This programme was designed for students who wish to develop their French language skills in a professional context. It is recognised by several regions in Germany in accordance with the Bildungsurlaub. Mixing our General French classes with afternoon multimedia sessions, cultural workshops and conversation classes means students cover all the different aspects of language learning.



02/03 - 13/11

- ✓ From 16 years-old
- ✓ 1 week minimum
- ✓ 25 or 30 hours per week
- ✓ Multimedia classes
- ✓ Cultural Workshops
- ✓ Conversation Classes (30h)
- ✓ A2 - C1
- ⓘ Adapted programme for A1
- ⓘ Beginners start on specific dates
05/01 | 06/04 | 25/05 | 06/07
20/07 | 03/08 | 28/09 | 16/11



Scan here to see a sample programme online

Programme details

Our modern multimedia tools will help our teachers efficiently train the students during the multimedia workshops. The teacher will be present during these workshops to help and advise the students.

The cultural workshops enable our students to discover fascinating points of the French way of life in a more relaxed environment.

The conversation classes then allow the students to put their newly acquired skills into action.

Low-level Programmes

Our Intensive programmes are adapted to students with at least an A2 level. Students with an A1 level will have the cultural workshops replaced by:

- 1h15 Conversation Classes
- 1h15 Multimedia Classes

Beginner students (A0) must enrol on specific dates for the morning classes. The additional 10-15 hours will be done in Multimedia classes. It is possible to combine this with One-to-One classes for maximal progress.

Timetable - 25h

- 15h of General French morning classes
- 5 hours of Cultural Workshops
- 5 hours of Multimedia classes

Timetable - 30h

- 15h of General French morning classes
- 5 hours of Cultural Workshops
- 7 hours of Multimedia classes
- 3 hours of Conversation Classes

PRICES PER WEEK AND PER PERSON

PROGRAMME	1 WEEK	2-3 WEEKS	4-8 WEEKS
Intensive 25 hours	430 €	405 €	405 €
Intensive 30 hours	525 €	495 €	495 €
ENROLMENT FEE: 80 €			

ONE TO ONE & COMBI

This programme is for students who would like a course tailored to fit their specific needs. The programme can be made up of one-to-one classes or combined with the General French, Intensive, and 30+ courses.

✓ All year-round

✓ From 16 years-old

✓ 1 week minimum

✓ 15 to 30 hours per week

📅 **Beginners start on specific dates**

05/01 | 06/04 | 25/05 | 06/07

20/07 | 03/08 | 28/09 | 16/11

One-to-One Courses

Our One-to-One classes offer students flexibility during their time in La Rochelle.

The course offers 15 to 30 hours per week and sessions take place with either morning or afternoon classes or set hours between 9AM and 7PM for those doing more than 20h.

Combi Courses

5 or 10 hours of one-to-one classes can be added to the General French course or the 30+ programme in September.

One-to-one classes take place in the afternoon. Your timetable will be given to you on your first day.

NUMBER OF HOURS	PROGRAMME	PROGRAMME WITH GENERAL FRENCH	PROGRAMME WITH 30+
20h00	15 hours of group classes + 5 hours of one-to-one	Combi A	Combi B
25h00	15 hours of group classes + 2 workshops + 5 hours of one-to-one	Combi C	Combi D
	15 hours of group classes + 10 hours of one-to-one	Combi E	Combi F
30h00	15 hours of group classes + 2 workshops + 10 hours of one-to-one	Combi G	Combi H
	15 hours of group classes + 15 hours of one-to-one	Combi I	Combi J



PRICES PER WEEK AND PER PERSON

Bildungsurlaub Approved

PROGRAMMES	1 WEEK	2-3 WEEKS	4-8 WEEKS
One-to-one 15h	1 215 €	1 170 €	1 170 €
One-to-one 20h	1 620 €	1 560 €	1 560 €
One-to-one 25h	2 025 €	1 950 €	1 950 €
One-to-one 30h	2 430 €	2 340 €	2 340 €
Combi A 20h	735 €	700 €	680 €
Combi B 20h	880 €	835 €	825 €
Combi C 25h	815 €	775 €	755 €
Combi D 25h	950 €	900 €	895 €
Combi E 25h	1 140 €	1 090 €	1 070 €
Combi F 25h	1 285 €	1 225 €	1 215 €
Combi G 30h	1 220 €	1 165 €	1 145 €
Combi H 30h	1 360 €	1 295 €	1 285 €
Combi I 30h	1 545 €	1 480 €	1 460 €
Combi J 30h	1 690 €	1 615 €	1 605 €
ENROLMENT FEE: 80 €			

30+ COURSE

Throughout the month of September, **inlingua** organises a 30+ course for adult students who wish to study French with other people of their age group. Several interesting and relevant topics are covered in class each week. Students also participate in a wide range of activities each week to make sure they really get the most out of their time in La Rochelle.



📅 07/09 - 02/10

- ✓ From A2 to B2
- ✓ Open to 30+ students
- ✓ 1 week minimum
- ✓ Max. 6 students per group
- ✓ 15 or 20 hours

Programmes

Students on our 30+ course can choose between a 15 or 20-hour programme :

15-hour option

- 15 hours of classes from Monday to Friday (3 hours per day)
- Afternoon/evening activities

20-hour option

- 15 hours of classes from Monday to Friday
- 5 hours of afternoon cultural workshops
- Afternoon/evening activities

Timetable

15-hour option

First day:

8:30 to 9:30: Oral placement tests
9:30 to 10:00: Presentation of the team and the week's activities

Monday:

10:00 - 1:15 (15-minute break)

Tuesday - Friday:

9:00 - 12:15 (15-minute break)

20-hour option

Those on the 20-hour course follow the same timetable as those doing 15 hours of morning classes. On top of these classes they have :

Cultural Workshops

13:30 - 16:15 (Tuesdays & Fridays)

Programme Details

Several afternoon or evening activities are offered on top of the French course allowing our students to practice their French in a more immersive environment.

These activities include our weekly P'tit RDV, visits to museums, the towns and villages around La Rochelle, wine tasting, cognac tours, oyster tasting, and even an evening fishing in a hut over the sea with the famous carrelets in Angoulins

Some activities require financial participation from the students (surf lessons, cooking lessons, catamaran cruise etc.)

We guarantee our 30+ students the possibility of renting a bike for the duration of their stay (20€/week).

For students who want a more personalised approach to their learning, this programme can also be combined with One-to-One classes (see Combi Programmes p.15).

PRICES PER WEEK AND PER PERSON

PROGRAMME	1 WEEK	2-3 WEEKS	4 WEEKS
30+ 15 hours	475 €	445 €	435 €
30+ 20 hours*	550 €	515 €	505 €
ENROLMENT FEE: 80 €			

* The afternoon cultural workshops on the 20h course are with adult students of all ages.

50+ CULTURE

Discover the joy of learning French in a relaxed and enriching environment tailored for students over 50! Our 50+ program offers more than just language lessons – it's an immersive cultural adventure in the heart of the beautiful La Rochelle region. Through interactive classes, guided tours, and hands-on experiences with local traditions, you'll not only improve your French but also connect deeply with French culture. Whether it's exploring historic sites or tasting regional specialties, this program promises a unique and fulfilling experience.



✓ 18/05 - 29/05

✓ 14/09 - 25/09

- ✓ Max. 6 students per group
- ✓ 1 week minimum
- ✓ A2 - B2
- ✓ Bus pass or bicycle included
- ⊗ Not open to beginners

Programme details

Our 50+ programme offers a well-rounded experience combining engaging French language lessons with cultural exploration.

Designed for students over 50, it focuses on effective communication while providing you with opportunities to discover French history, cuisine, and local traditions.

With a balance of interactive classes, guided tours, and social outings, this programme allows you to learn in a fun and supportive environment, all while uncovering the hidden gems of La Rochelle and beyond

Timetable

First day:

8:30 to 9:30: Oral placement tests
9:30 to 10:00: Presentation of the team and the week's activities

Monday:

10:00 - 1:15 (15-minute break)

Tuesday - Friday

9:00 - 12:15 (15-minute break)

Cultural Workshops

13:30 - 16:15 (Tuesdays & Thursdays)

Themes ranging from French history, French cuisine, trying local specialties, visits to museums, etc.

2 Guided Tours per week

Discover the history and culture of La Rochelle with guided tours of museums, meeting with local artisans, and much more.

At least 1 evening out

Enjoy the local nightlife in fantastic bars and restaurants with other students and members of staff from the school.

Saturday Excursions

Tour of the Île de Ré, visit the cellars of Cognac with a guided tour and brandy tasting, or even cruise along the Marais Poitevin on a boat.

Our visits are always accompanied by a member of the **inlingua** team, or a tour guide to help you discover hidden gems and better understand the local history.

Included In Price

- Transport Costs
- Visits & Activities (not including lunch)
- Bus pass or bicycle



Example of the timetable for the first week

	MONDAY	TUESDAY	WEDNESDAY	THURSDAY	FRIDAY	SATURDAY
Morning	French classes					Excursion to the île de Ré
Afternoon	Cultural Tour <i>Guided tour of the town with a teacher</i>	Cultural Workshop <i>La Gastronomie Française</i>	Cultural Tour <i>Trip to Fouras & Cognac tour</i>	Cultural Workshop <i>Découverte de spécialités locales</i>	Lunch in Marennes at <i>L'Eclade</i>	
Evening		18:30 Apéritif on the port		16:30 Oyster tasting at the school		

* The first week focuses on French gastronomy, the second week focuses on French culture and history

Our 2-week courses take place out of the high summer season. While it is recommended that the stay be for 2 weeks, 1-week courses are also possible. However, arrivals must be in time for the first week of each course.

Accommodation

Students can choose between a host family, a student residence, or ask for our personalised accommodation service to find the apartment, the house or the villa that they need (page 28-32).

PRICE PER WEEK AND PER PERSON

1 WEEK	2-3 WEEKS
680 €	665 €
ENROLMENT FEE: 80 €	

Extras

It is possible to book a French cookery class during your stay. Please contact us before your arrival if you would like to set it up.

ADULT SAILING COURSE

With **inlingua's** Adult Sailing Course, students combine French learning in the morning with exciting sailing sessions in the afternoon. Small group classes ensure rapid progress in French, while afternoons on the water offer an unforgettable experience of teamwork and discovery in the beautiful bay of La Rochelle.



Adult Sailing Course

📅 **29/06 - 21/08**

- ✓ From 16 years-old
- ✓ 1 week minimum
- ✓ Sailing or Windsurfing
- ✓ Afternoon & evening activities
- ⓘ **Beginners start on specific dates :**
06/07 | 03/08

Adult Sailing Course

When signing up for the General French course in July, our adult students can choose to take part in our sailing Course with a wide range of fun activities for them to enjoy.

The course consists of :

- 15 hours of General French classes
- 5 sailing or windsurfing classes

Programme details

The Adult Sailing Course combines language learning with an unforgettable maritime experience. It includes 15 hours of French lessons from Monday to Friday, allowing participants to improve their language skills in a dynamic and engaging way. Each afternoon, students enjoy 3 hours of sailing or windsurfing at La Rochelle Nautique, a renowned sailing club located less than 1 km from inlingua.

La Rochelle Nautique is one of the oldest and most prestigious sailing clubs in France, offering excellent facilities and professional instructors who ensure both safety and enjoyment on the water. Participants can choose between traditional sailing, perfect for those who want to learn how to handle a boat and navigate the wind, or windsurfing, ideal for those seeking a more athletic and thrilling experience.

Set against the beautiful backdrop of La Rochelle's old port and the Atlantic Ocean, this course is a fantastic opportunity to combine language learning, sport, and cultural discovery. Whether you are a beginner or already have some experience, you'll enjoy the unique chance to practice French in the morning and feel the sea breeze in the afternoon – a perfect balance between study and adventure.

PROGRAMME	1 WEEK	2-3 WEEKS	4-8 WEEKS	9-12 WEEKS	12+ WEEKS
General French Adult Sailing Course	620 €	585 €	585 €	/	/
ENROLMENT FEE: 80 €					

FAMILY PROGRAMMES

inlingua La Rochelle provides a variety of activities suitable for parents, grandparents, and children where everyone can tailor their experience to their preferences. You have the flexibility to select from a range of activities, whether you want to include French lessons or not. Our goal is to ensure that everyone can make the most of their time with us by enjoying activities and courses that match their interests and needs.



FAMILY PROGRAMME

Our French classes are open to children from the age of 8 during the Summer holidays (see page 20).

Group classes take place in the mornings no matter the age of the participant. **inlingua** offers alternative activities during the French classes, especially for younger children.

For children under the age of 8, **inlingua** offers a baby sitting service. Our babysitters are all professionally trained to ensure the utmost safety of your children, and they may even learn a bit of French along the way!

4-7 YEAR-OLDS MORNING SAILING

inlingua works hand in hand with our partners at the La Rochelle Nautique sailing school, only a short walk from the school.

Sailing lessons take place in the mornings from 9:30 to 12:30.

- For 4/5 year-olds: sailing in the morning
- For 6/7 year-olds: sailing in the morning

Our morning sailing programme includes supervision from a member of the **inlingua** team between 9 and 9:30, the transport from the school to the sailing club - a member of the team will pick the children up from the club on Mondays.

FROM 8 YEARS-OLD FRENCH + SAILING

Students who are at least 8 years-old may choose between the sailing classes in the morning or our French & Sailing course

With this course, students can enjoy the benefits of both following French classes in the mornings and sailing classes in the afternoons

Students under the age of 13 on our French & Sailing course do not receive the following services from the school and must be accompanied by a parent at all times:

- Supervised lunch
- Transport from the school to the sailing club
- Evening activities & Excursions

FAMILY PROGRAMME	CHILD CARE	SAILING	FRENCH + SAILING
0 to 3 years old	Quote on enquiry	/	/
4 to 5 years old	Quote on enquiry	350 €	/
6 to 7 years old	Quote on enquiry	350 €	/
8+	/	390 €	650 €
ENROLMENT FEE: 80 €			



LONG-TERM COURSES

inlingua's long term courses enable students to obtain the B2 level which is necessary to apply to French higher education.

inlingua offers an ideal learning structure, with a tutor being assigned to each student to closely monitor their progress and make sure they have all the tools they need to reach their objective. A language level test will be carried out once every term to show the student their progression.



Programme Details

We recommend taking part in the 20h programme to maximise your learning potential. However, the 15h programme is also available for those who wish to have fewer hours.

inlingua also offers a full support service to help students get set up in France offering help with :

- Documents for visa application
- Finding accommodation
- Guarantor service
- Insurance & banking services
- Bus card, SIM card
- Applying to higher education
- And much more

Our partners at higher education schools and universities accepted to examine your application before you have reached the required B2 level. This means you can already have your studies planned out before even arriving in France to learn French. You can choose what you wish to study from a wide range of domains such as:

- Marketing
- Management
- Human Ressources
- Fashion
- Tourism
- Computer Science
- Law
- Cuisine
- And much more...

The school you choose will examine your application and will give you an answer within a month. We will ask for students to choose at least three schools to which we will apply in their order of preference.

Once you have received your acceptance letter from the school, it is up to you to reach the B2 level before the beginning of the next school year.

For more details, ask us for the Long Term Courses brochure or download it from our website.



Scan this code to see our Long-term Courses brochure online

PROGRAMME	LEVELS A0 - B1			LEVEL B1 → B2
	1 TERM 12 WEEKS	2 TERMS 24 WEEKS	3 TERMS 36 WEEKS	1 TERM 12 WEEKS
15 hours	2 600 €	4 700 €	6 355 €	/
20 hours	3 430 €	6 100 €	8 115 €	/
25 hours	/	/	/	3 680 € students enroled for one term only
15h General French + 5h Exam Prep + 5h University Prep				2 850 € students enroled for more than one term
ENROLMENT FEE : 140 €				

JUNIOR COURSES

SUMMARY JUNIOR COURSES



P.20

School Groups



P.21

Junior French Course 15h



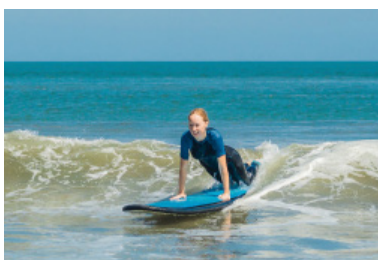
P.22

Full-day Programmes



P.23

Camp - Multiactivity



P.24-25

Camp - Sea, Surf & Wind



P.26

Camp - Sailing/Windsurfing



P.27

Junior Accommodation

SCHOOL GROUPS



Olivier Ihonéz

IMMERSION IN FRANCE

What better way to motivate and inspire your students throughout the year!

inlingua La Rochelle offers a school programme specially adapted for groups. We regularly receive groups from all over the world such as Austria, Australia, Spain, Italy, Tunisia, Ukraine, and even as far as Vietnam.



Scan this code to see our School Groups Brochure online

Classes

Classes in small groups are focused around oral communication and enable students to progress faster. Lessons are generally in the mornings but may be organised in the afternoons to reduce the cost.

Activities

Activities are either organised by the accompanying adult from the group, or under the supervision of the team at **inlingua**.

Accommodation

Accommodation can either be organised in host families, at the youth hostel right next to the school, or in a 2/3 star hotel.

2

Get in touch with us to ask for our special School Groups brochure or download it from our website.

JUNIOR COURSES

FROM 8 YEARS-OLD

JUNIOR FRENCH COURSE

Join us for our Junior morning French class, where students embark on an enriching journey into the world of the French language and culture. Through the **inlingua** method, they'll have the opportunity to explore all aspects of this rich heritage, making the most of their immersive experience



📅 15/06 - 21/08

✓ From 8 years-old

✓ 1 week minimum

✓ 15 hours per week

✓ Max. 10 per group

⚠️ Dates for beginners:

06/07 | 20/07 | 03/08



Scan here to see a sample programme online



Classes

Our aim is for our students to learn French in a natural way and work on speaking and writing skills through lively and interactive activities.

We emphasize the importance of speaking in real-life situations and working on conversational fluidity.

Parents also participating in our courses have frequently told us their child had got a real taste for the French language after their stay with **inlingua**.

Groups

Through our online level placement test and an oral test with a teacher on the first morning, our teachers will make sure that the students participate in classes appropriate for their level to ensure optimal progress with their French.

Beginners

Our Junior Courses are designed for students who have already studied French at school. It is possible for beginners to sign up, but this must be done on one of our specific dates for beginners.

Class projects

Each week the students work on a class project allowing them to use all they have learned in a real-life situation, for example: setting up a travel blog to talk about their time in La Rochelle, activities that can be done here, giving advice to future travellers.

Students often create their own short films, or write stories in the classic French "bande dessinée" style.

Programme

Monday: 10:00 to 1:15

Tuesday to Friday: from 9:00 to 12:15

PRICE PER WEEK AND PER PERSON

PROGRAMME	1 WEEK	2-3 WEEKS	4-8 WEEKS
Junior French Course 15h	340 €	320 €	305 €

ENROLMENT FEE: 80 €

FULL-DAY COURSES



- ✓ From 13 years-old
- ✓ 3 Programmes Available
- ✓ 1 week minimum
- ✓ 15 hours per week
- ✓ Max. 10 per group
- ✓ Optional Meals (70€/week)

Lunch : Monday to Friday

Dinner : Tuesdays & Thursdays

COURSE DATES

- ✓ **Dates for Multiactivity**
15/06 - 21/08
- ✓ **Dates for Sailing/Windsurfing**
29/06 - 21/08
- ✓ **Dates for Sea, Surf, & Wind**
06/07 - 07/08
- ⚠ **Dates for beginners:**
06/07 | 20/07 | 03/08

Course Details

Classes

Monday

10:00 to 1:15

Tuesday to Friday

9:00 to 12:15

Afternoon Activities

Monday - Friday

2PM to 6PM

Transport to and from the activity is included in the course

Evening activities

Tuesdays & Thursdays

Transport from and to accommodation is not included for evening activities

Saturday Excursions

A day trip to a local town or island is included in the price.

Multiactivity

We offer a wide range of exciting and enjoyable activities to our students

For more information see p.22

Sailing & Windsurfing

The sailing club is less than a 1km from **inlingua**. Each week, students can choose between sailing and windsurfing (*this choice has to be made at the time of booking*).

All the equipment is provided on site, and the activity is supervised by professional sailors.

For more information see p.23

Sea, Surf, & Wind

Our Sea, Surf, & Wind course offers students the opportunity to discover the thrilling sensations of watersports in La Rochelle and the surrounding area.

For more information see p.24-25

PRICE PER WEEK AND PER PERSON (WITHOUT ACCOMMODATION)

PROGRAMME	1 WEEK	2-3 WEEKS	4-8 WEEKS
French + Multiactivity	655 €	615 €	585 €
French + Sailing or Windsurfing	730 €	700 €	680 €
French + Sea, Surf, & Wind	990 €	975 €	960 €
Additional 5 hours One-to-One	405 €	405 €	405 €
ENROLMENT FEE: 80 € ADDITIONAL COST FOR MEALS : 70 € /WEEK			

JUNIOR COURSES

CAMP – MULTIACTIVITY

Experience an unforgettable summer with our Multiactivity program! Dive into the world of French language and culture during morning classes, and in the afternoons, explore a diverse range of enjoyable activities, making the most of your summer holiday.



 **14/06 - 22/08**

- ✓ From 13 years-old
- ✓ 1 week minimum
- ✓ 15 hours per week
- ✓ Max. 10 per group
- ✓ Homestay included
- ✓ Possibility of booking different programmes each week

 **Dates for beginners:**

06/07 | 20/07 | 03/08



Scan here to see a sample programme online

Course Details

Classes

Monday
10:00 to 1:15
Tuesday to Friday
9:00 to 12:15

(Lunch is supervised by a staff member)

Afternoon Activities

Monday - Friday
1:30PM to 5:30PM

Transport to and from the activity is included in the course

Evening activities

Tuesdays & Thursdays (transport home included with the school minibuses)

Saturday Excursions

A full-day excursion to nearby towns and islands.

Full-board accommodation

Homestay accommodation with all meals is included in the cost of the camp.

For more information see p.27

Transport

All students on our Junior Summer Camps receive a bus card or a bicycle for their time in La Rochelle (subject to availability).

Optional Extras

One-to-One Classes

Students on the Multiactivity course can choose to add 5 hours of One-to-One classes each week.

These classes take place during the first activity of the afternoon and students then join the rest of the group either for the end of the activity, or for the following one.

Airport Transfers

We can organise for pick ups and drop offs in Bordeaux and Nantes airports with a member of staff.

For more information see p.33

Residence Accommodation

During July & August, students can choose to stay at the residence next to the school

For more information see p.27

PRICE PER WEEK AND PER PERSON

(FULL-BOARD HOMESTAY ACCOMMODATION AND ACTIVITIES INCLUDED)

PROGRAMME	1 WEEK	2-3 WEEKS	4-8 WEEKS
French + Multiactivity	1 020 €	995 €	970 €
5 additional hours of One-to-One	405 €	405 €	405 €
ENROLMENT FEE: 80 € / ADDITIONAL FEE FOR STUDENT RESIDENCE OR SPECIAL DIET (PAGE 27)			

SEA, SURF, & WIND

Come and discover our premium programme - Sea, Surf, & Wind. A course which will enable the more adventurous of our students to discover some of the best watersports available in the area around La Rochelle from Surfing, sand yachting, & wakeboarding, to skating, sailing and much, more!



 **06/07 - 08/08**

- ✓ From 13 years-old
- ✓ 1 week minimum
- ✓ 15 hours per week
- ✓ Max. 10 per group
- ✓ Homestay included
- ✓ Possibility of booking different programmes each week

 **Dates for beginners:**

06/07 | 20/07 | 03/08



Scan here to see a sample programme online



Course Details

Classes

Monday
10:00 to 1:15
Tuesday to Friday
9:00 to 12:15

(Lunch is supervised by a staff member)

Afternoon Activities

Monday - Friday
2PM to 6PM

Transport to and from the activity is included in the course

Evening activities

Tuesdays & Thursdays (transport home included with the school minibuses)

Saturday Excursions

A full-day excursion to nearby towns and islands is included in the price.

Full-board accommodation

Homestay accommodation with all meals is included in the cost of the camp.

For more information see p.27

Activities

Thanks to partnerships with local sports structures, our students can take part in a wide range of new activities such as:

Surfing Lessons

With a surf instructor offering classes wherever the waves are that day. The instructor picks up the students and drives them to the best spot of the day to guarantee good learning conditions.

On days where conditions do not allow for surfing classes (rough seas, etc.), the activity is replaced another sports activity (e.g. skateboarding etc.).

Sand Yachting

Our partnership with a local club in La Faute sur Mer allows students to immerse themselves in this unique activity for extended 3-hour trips along the picturesque beach.

As students glide across the sands in 3-wheeled boats, they're treated to not only an adrenaline-packed adventure but also a chance to appreciate the beauty of the coastal scenery.

PRICE PER WEEK AND PER PERSON

(FULL-BOARD HOMESTAY ACCOMMODATION AND ACTIVITIES INCLUDED)

PROGRAMME	1 WEEK	2-3 WEEKS	4-8 WEEKS
Sea, Surf, & Wind	1 320 €	1 270 €	1 270 €
ENROLMENT FEE: 80 € / ADDITIONAL FEE FOR STUDENT RESIDENCE OR SPECIAL DIET (PAGE 27)			



Wakeboard / Waterskiing

We take our students to Aiguillon sur Mer for waterski, kneeboard, and wakeboard sessions guided by their instructors. After a few sessions there are even ramps available for the more adventurous students!

Students also have access to two obstacle courses to tackle on the water, but be careful not to fall off!

Sailing

With the **inlingua** group leaders, our students go to our partner clubs offering sailing classes. Teamed up in twos on boats, they discover the joys of cruising around the bay of La Rochelle while learning the basics of sailing.

Sailing classes can depend on the tides and will take place when the conditions allow for this.

Stand-up Paddle

Our students go off on adventures with paddleboards. They start by going down a peaceful canal in La Rochelle before taking to the sea once they have mastered the basics.

We organise courses for the students to go through and team races. Sometimes we rent a XXL paddleboard allowing for fun team-building exercises with all the students on the same board.

Sample programme *(the programme changes each week depending on the weather and tides)*

	MONDAY	TUESDAY	WEDNESDAY	THURSDAY	FRIDAY	SATURDAY
Morning	French Classes					Excursion to the 'île de Ré
Afternoon	Surfing Classes	Bodyboard	Tree-top Zipwires	Sand Yachting	Moutnain Kiteboarding	
Evening	At home or at the residence	Barbecue at the school	At home or at the residence	Party on the beach with Group Leaders	At home or at the residence	

Waterski, Wakeboard, Kneeboard, Skateboarding, Zipwires, Sand Yachting, Surfing, Climbing, Slackline, Trampoline, And much more!

SAILING / WINDSURFING



✓ 28/06 - 22/08

The sailing club La Rochelle Nautique is located less than 1km from **inlingua** and 200 meters from our student residence. Watersports take place from Monday to Friday between 1:30pm and 4:30pm.

This course is a great opportunity for our students to meet young French people who are members of the club or other teenagers on holiday.

Around 75 students come to sail every week, 95% of whom are French, so it's a great opportunity to meet people and practice the language.



Scan here to see a sample programme online



Sailing Course

The sailing course takes place in catamarans where students are 2 per boat. When possible, each student is teamed up with a French teenager for them to get the best out of their immersive experience.

Students have lunch at the school with everyone else before leaving to go to the club around 1:15pm. The sailing classes then start at 1:30pm.

Students prepare the boats and go sailing with their instructor for 3 hours every afternoon.

It is possible to choose different programmes on different weeks upon booking. However, programmes may not be changed during the course.

Windsurfing Course

Discover the joys of zipping across the water with our windsurfing course offering 3 hours of classes every afternoon (Mon-Fri).

There are different groups according to the participants' levels so don't worry if you're a complete beginner!

The windsurfing classes are quite physically demanding so think about maybe combining this programme with a week of sailing or multiactivity.

It is not possible to change to a different course mid-week and we cannot guarantee a place in a different programme to those confirmed at the time of inscription. This depends on availability at the sailing club.



Students can choose to do different courses on different weeks

(e.g. 1 week Multiactivity, 1 week Sailing, and 1 week Windsurfing)

This must be organised at the time of booking.

PRICE PER WEEK AND PER PERSON

(FULL-BOARD HOMESTAY ACCOMMODATION AND ACTIVITIES INCLUDED)

PROGRAMME	1 WEEK	2-3 WEEKS	4-8 WEEKS
French + Sailing	1 125 €	1 090 €	1 050 €
French + Windsurfing	1 125 €	1 090 €	1 050 €
ENROLMENT FEE: 80 € / ADDITIONAL FEE FOR STUDENT RESIDENCE OR SPECIAL DIET (PAGE 27)			

ACCOMMODATION JUNIOR CAMPS



HOMESTAY

📅 28/06 - 22/08

- ✓ From 13 years-old
- ✓ Included in Camp prices

Discover the French way of life through an authentic experience of French living. Our host families are individually selected for their friendliness and security. We regularly meet with them in order to create a true relationship based on trust.

Our hosts live on average 30 minutes from the school either by bike or by bus (max. 45'). Students can choose between a bicycle or a bus card for their time in La Rochelle (depending on availability of bicycles).

The cost of homestay accommodation is included in the package price of Junior Camps. A pick up and drop of service is also included for arrivals in La Rochelle - either the host or someone from the school will take care of this.

Meals

- Breakfast : Provided at home by hosts
- Lunch : Provided at the school
- Dinner : Provided at home except on evenings where activities are organised with the school

Going Out

- ⚠ Students staying with a host family have curfews for going out in the evening. If these curfews are not respected, the school reserves the right to revoke their going out privileges.



STUDENT RESIDENCE

📅 28/06 - 15/08

- ✓ 13-15 years-old
- ⚠ Additional cost for residence accommodation

We also offer accommodation in a residence only a short walk from the school (600m). All the junior rooms are grouped together on the same floor where our group leaders live on site taking care of activities, meals, and the safety of the group.

- Each room has two beds, toilets and a shower.
- Common area downstairs with drinks and snacks
- Large swimming pool with a terrace outside
- Rooftop terrace with a 360° view of the port and the ocean

A laundry service is included with a partner near the residence, and bedding is changed regularly.

Meals

- Breakfast : Provided at the residence
- Lunch : Provided at the school
- Dinner : In one of our several partner restaurants or at the residence

Going Out

- ⚠ Students staying at the residence do not have permission to go out unsupervised, as they are under the school's responsibility at all times

PRICE PER WEEK AND PER PERSON

SERVICE	1 WEEK
Additional fee - Junior Summer Residence	370 €
Additional fee - Special Diet (<i>vegetarian or vegan</i>)	65 €
Extra night - Homestay	44 €
Extra night - Résidence	90 €

* Students following a gluten free diet may not choose the Residence option - this is only compatible with homestay

www.sprachenmarkt.de, Tel: +49-711-12 85 15 40, service@sprachenmarkt.de

ACCOMMODATION

Vieux port
de La Rochelle



Plage Des Minimés



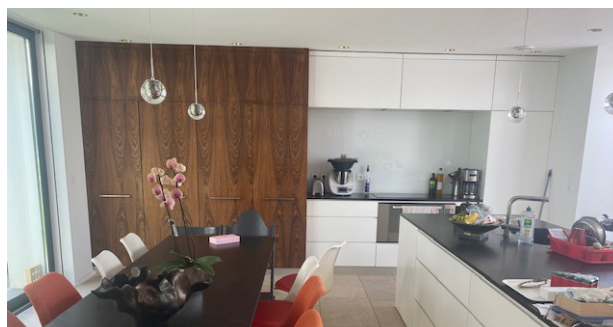
Escale marine



New Rochelle

inlingua®
La Rochelle

HOMESTAY



- ✓ **All-year round**
- ✓ **From 16 (Adult courses)**
- ✓ **1 week minimum**
- ✓ **Half-board Accommodation**
- ✓ **Arrivals on Sundays**
- ✓ **Departures on Saturdays**
- ⚠ **On average 30 minutes from the school by bike or by bus.**
Maximum distance, 45 minutes by bus.

Homestay accommodation enables you to embrace a fully immersive experience into French culture, cuisine, and way of life in a relaxed environment. If you are looking for an experience of "la vie rochelaise", this is the option for you!

We work with a network of local families who enjoy welcoming students from all over the world for the enriching cultural experience that guests bring to their homes.

Arrivals take place on Sundays and departures on Saturdays. Your hosts will pick you up from either the airport or train station upon arrival, and they will bring you to school on your first morning to show you the way.

Prior to your arrival, you will receive your host's profile, which includes information on the person/people you will be staying with, their home address, email address, phone number and the details of how to get from their house/flat to the school.

You can also request for a host family with a private bathroom for an additional cost. This will include a shower and a sink for you to wash. Toilets, however, may be in a different room.

Our hosts will provide students with half-board accommodation (breakfast and dinner) and full-board on Sundays.

PRICES PER WEEK AND PER PERSON

DURATION - BOARD	UNDER 3 MONTHS	FROM 3 MONTHS
Homestay - Half-board	260 €	210 €
Extra night	44 €	/
Homestay - Private Bathroom or Special Diet (vegetarian, vegan, gluten free, halal)	305 €	255 €
Extra night - Private Bathroom or Special Diet	51 €	/
ACCOMMODATION ADMIN FEE: 70 € / PERSON		

NEW ROCHELLE

📅 05/04 - 27/08

- ✓ From 18 (Adult courses)
- ✓ 1 week minimum
- ✓ Self-catering
- ✓ Arrivals on Sundays
- ✓ Departures on Saturdays
- ✓ 5 minutes from the school



The Résidence New Rochelle is ideally located only a 5-minute walk from **inlingua**. You will find an open common area and a large swimming pool. An ideal location only 300 metres from the beach!

The studios are around 16m² and are fully equipped with a kitchen area, a bedroom area and a bathroom

It is possible to book a parking space for an additional 15€/week.

Included in the price:

- Towels and bed linen
- Wifi throughout the residence

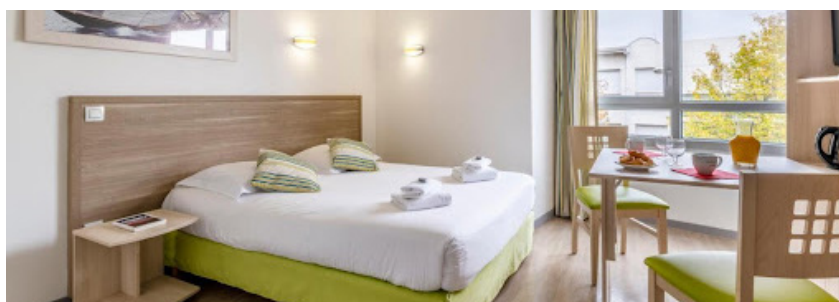
	LOW SEASON (SEPT - JUNE)		HIGH SEASON (JULY - AUGUST)
Studio/week	415 €		515 €
Studio/month	More than 24 weeks : 621 €	Fewer than 24 weeks : 879 €	1 560 €
Extra night	70 €		80 €
TOURIST TAX : 4.20 € / PERSON & PER DAY / ACCOMMODATION ADMIN FEE: 70 € / PERSON			

ESCALE MARINE

📅 01/01 - 29/06

📅 01/09 - 31/12

- ✓ From 18 (Adult courses)
- ✓ 1 week minimum
- ✓ Self-catering
- ✓ Arrivals on Sundays
- ✓ Departures on Saturdays



This 3* residence is located near the centre of town; You can walk to the famous Vieux Port in under 10 minutes, or even faster with the sea bus (boat). **inlingua** is only a 5-minute bus ride, a 10-minute cycle, or an enjoyable 20-minute stroll away from the residence.

The studios are for one or two people and are modern and comfortable. The studio apartments are all 18m² abd are equipped with a kitchen area, a sleeping area, and a bathroom.

It is possible to book a parking space for an additional 55€/week.

Services included

- A heated indoor pool
Open all year-round
- Wi-Fi in all the studios

LOW SEASON - SEPTEMBER TO JUNE	
Studio/week	390 €
Studio/month	680 €
Extra Night	70 €
TOURIST TAX : 2.30 € / PERSON & PER DAY / ACCOMMODATION ADMIN FEE: 70 € / PERSON	

PERSONALISED ACCOMMODATION SERVICE



inlingua is partners with the biggest estate agency in La Rochelle who have holiday apartments to let throughout the year. This can be a good option for families travelling together or for people who would like their own space during their time in La Rochelle.

These places have been selected for:

- Their proximity to the school and the beach/centre of town
- Their comfort and functionality

Please let us know your requirements for an apartment, we will contact our partners and send you a list of options within 48 hours.

Once you have chosen an apartment to rent, a deposit must be paid within 8 days of confirming your booking.

Stays are from Saturday (4pm) to Saturday (12am), keys may be picked up from the agency near the school when you arrive.

If the agency is closed, the keys will be in a safe outside the front door - we will send the code to access the safe

Wifi is not included in the rental but can be booked in advance through the agency.

There is a small difference between the prices quoted by the agency and the price on the final invoice due to the additional costs for services.

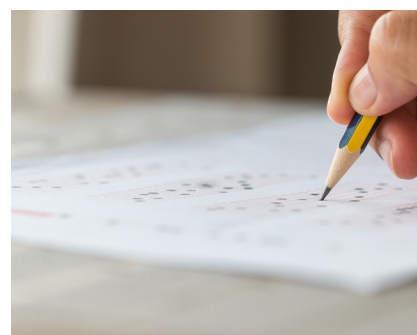
These services include:

- Towels
- Bed linen
- Tourist Welcome Pack :
Toilet paper, bin bags etc.
- Cleaning upon departure
- Tourist tax (for adults)

PRICE RANGE PER WEEK

	LOW SEASON	JULY - AUGUST
Studios	250 - 300 €	300 - 420 €
T2 (1 bedroom)	300 - 370 €	390 - 590 €
T3 (2 bedrooms)	380 - 470 €	530 - 750 €
T4 (3 bedrooms)	500 - 620 €	700 - 1 000 €
ACCOMMODATION ADMIN FEE: € 70/PERSON		

USEFUL INFORMATION



JUNIOR TRANSFERS (PRICE PER TRIP)

NANTES AIRPORT	BORDEAUX AIRPORT
110 €	130 €

A member of the **inlingua** team will come to pick up the student from the airport when they arrive and take them to their place of accommodation

If several students arrive at similar times, we may ask them to wait for the next arrival with the group leader. In this case a meal will be provided if necessary.

FIRST DAY OF CLASSES

MONDAY MORNING

TIME OF ARRIVAL AT SCHOOL	START OF CLASSES
08:30	10:00

On the first day students are asked to come to the school at 8:30 for a presentation of the team, their programme, and the town. Breakfast, coffee, and fruit juices are served by **inlingua**.

An oral test in the form of a conversation with a teacher is organised for all the new students so we can put together the groups for the coming week.

Our online level test is vital as it helps us prepare the courses and the groups. Students are required to do this test at least two weeks before their arrival. This is even more important for courses with level requirements (30+, 50+, Workshops, etc.).

TRAVEL INSURANCE

STUDENTS COMING FROM WITHIN THE EU

DURATION	6-40 YEARS OLD	40-65 YEARS OLD
1 week	20 €	25 €
2 weeks	35 €	38 €
Monthly rate	80 €	83 €

STUDENTS COMING FROM OUTSIDE OF THE EU

DURATION	6-65 YEARS-OLD
1 week	25 €
2 weeks	40 €
Monthly rate	90 €

CANCELLATION INSURANCE

Please contact us for a quote for your cancellation insurance.

ACTIVITIES FOR ADULTS

ACTIVITY	PRICE
Sailing / Windsurfing	272 € / week
Gym Membership	From 20€ / week
Cookery Classes	60 €
Surfing lessons	50 €

These prices may change depending on the provider available.

GETTING TO LA ROCHELLE



Arrivals by train

The beautiful train station of La Rochelle is located in the heart of the city less than 10 minutes by bike or by car from **inlingua**. If you are using our personalised accommodation service, or staying in one of our partnered residences, a transfer can easily be organised for 34€ from either the train station or the airport in La Rochelle.



Arrivals in Nantes or Bordeaux

Transfers from Nantes or Bordeaux airports to La Rochelle: from 50€

Taxi: From 350€

Trains: from 50€ (airport shuttle + train)

- 2 trains per day on average
- A shuttle service links the airport to the train station
- 4 buses per day on average

Arrivals in Paris

A transfer with a private driver can be organised from the airport to one of the train stations in Paris where students can jump on a train to La Rochelle.





ICELAND
Reykjavik



+ ALGERIA, EGYPT, MOROCCO, TUNISIA,
CANADA, MARTINIQUE, SENEGAL

TURKEY
Istanbul
Antalya



ESTIMATED PRICES FOR TRANSFERS

ADULT TRANSFERS	NANTES AIRPORT TO LA ROCHELLE	BORDEAUX AIRPORT TO LA ROCHELLE	PARIS AIRPORT TO LA ROCHELLE
Taxi one way	350 € - 600 €	350 € - 600 €	-
Train one way	60 € - 80 €	70 € - 90 €	90 € - 140 €
Taxi + Bus	-	-	110 € - 140 €
Taxi + Train	-	-	180 € - 220 €

FROM LA ROCHELLE AIRPORT OR TRAIN STATION TO ACCOMMODATION: € 34

These prices are estimated

Upon request, a quote will be sent to the student and an additional invoice will be sent once confirmed.

Transfers cannot be organised more than 3 months before the student's arrival in La Rochelle.
www.sprachenmarkt.de, Tel: +49-711-12 85 15 40, service@sprachenmarkt.de